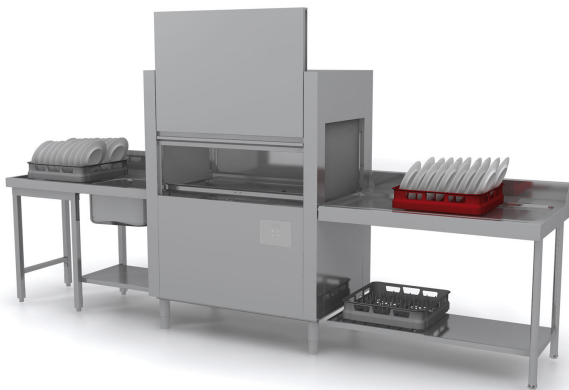




RACK CONVEYOR

D821LTDD - D821LTDS



Electronic rack conveyor dishwasher - 12

SEE MORE TECHNICAL DATA:

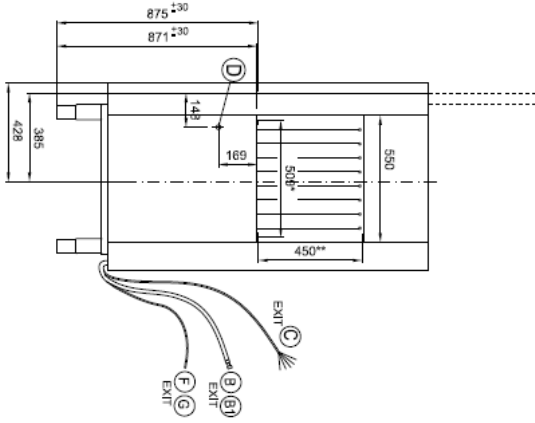
Max productivity (basket/hour)	60-120
--------------------------------	--------

HIDE THE OTHER TECHNICAL DATA:

External dimensions - WxDxH (cm)	115x77x162
Hot water Power (kW)	13,5
Cold water Power (kW)	22,5
Cold water Power with regenerator (kW)	18
Washing pump capacity (kW)	750
Prewashing pump capacity (kW)	-
Water consumption rinsing (lt/hour)	180
Drying-power (kW)	6
Drying-fan capacity (m3/hour)	1400
Supply (N)	400V 3N 50Hz
Weight (kg)	200
Volume (m3)	1.39
Power (kW)	23

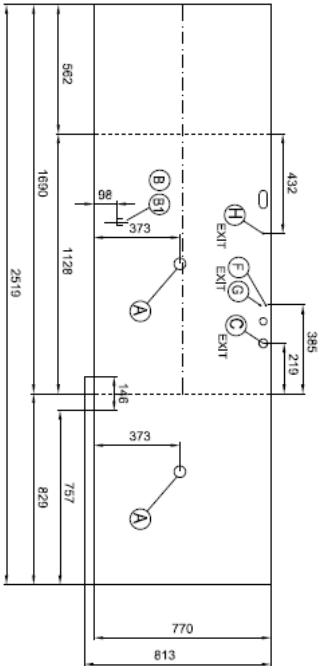
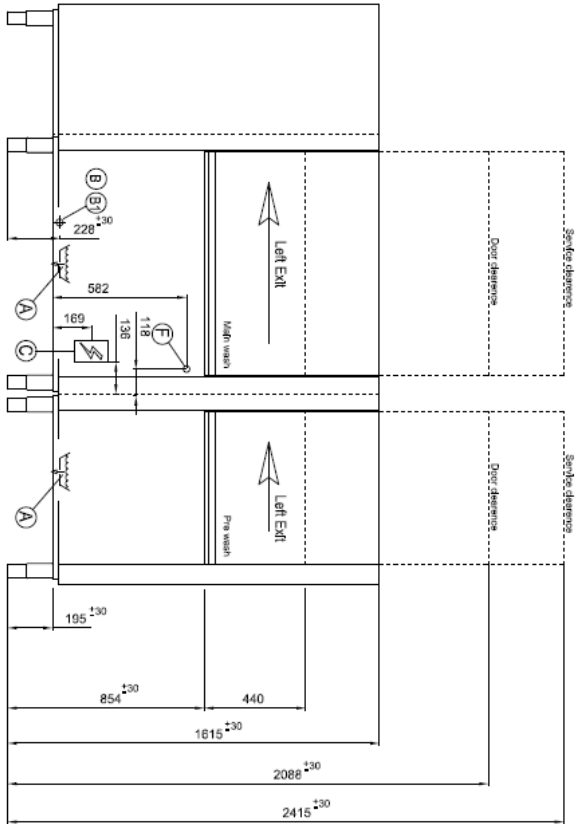
Savings on operational costs, great efficiency, hygiene, flexibility and total control: these are the dreams that come true with the highly advanced Domina Tetra and MonoRinse technology.

The IdroWash plus wash system with its constant flow spray arms insures the best absorbed power use without unuseful load waste. The washing cycle becomes quicker despite less powerful pumps, thus reducing energy consumption.



* USEFUL WIDTH FOR BASKET
 ** USEFUL HEIGHT FOR BASKET

A		Ø 1"1/2 M	D		Ø PG11	End switch
A1		Ø 31 M	E		Ø 250	Steam exhaust
B		G 3/4" M	F		Ø 14 M	Delegant inlet
B1		G 3/4" M	G		Ø 7 M	Rinse aid inlet
C		PG36 Power supply	H		Ø 6	Equipotential



L		Ø 250	Dryer sudon
---	--	-------	-------------

Installation layout
 Rack Type

Code: 7202S Rev.: 00

